

5910

Vol 1068 No. 134

CRESCENT AVE.

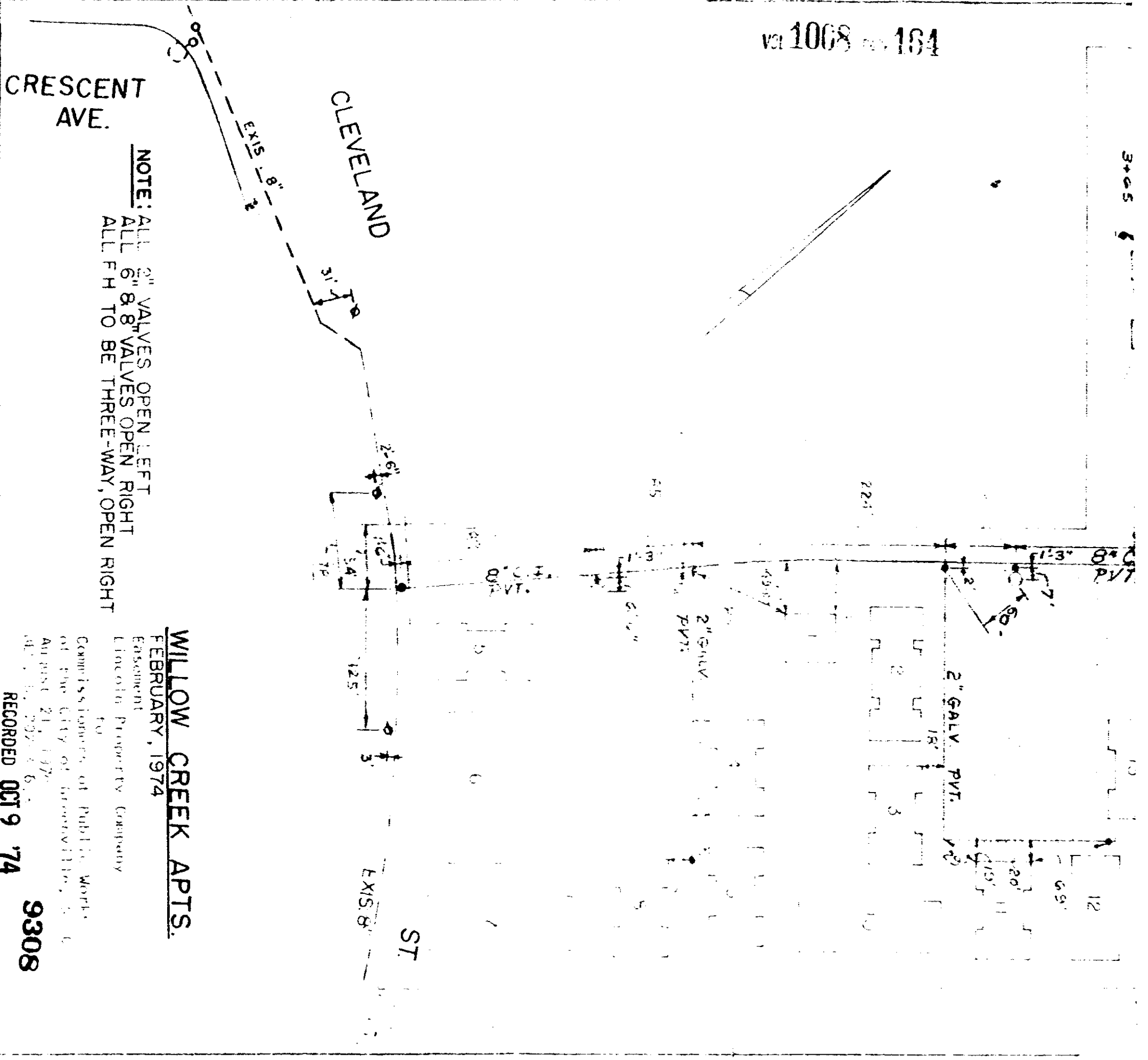
CLEVELAND

NOTE: ALL 2" VALVES OPEN LEFT  
ALL 6" 8" VALVES OPEN RIGHT  
ALL FH TO BE THREE-WAY, OPEN RIGHT

WILLOW CREEK APTS.  
FEBRUARY, 1974

Easement  
Lincoln Property Company  
FO

Commissioners of Public Works  
of the City of Ironville, Va.  
August 21, 1973  
Adopted by Resolution No. 6  
RECORDED OCT 9 '74 9308



4328 RV-2